



CAUTION

Do not use brake to slow down the motor! The brake is only intended for use as a safety brake and must be mounted by Nanotec.

TECHNICAL DATA

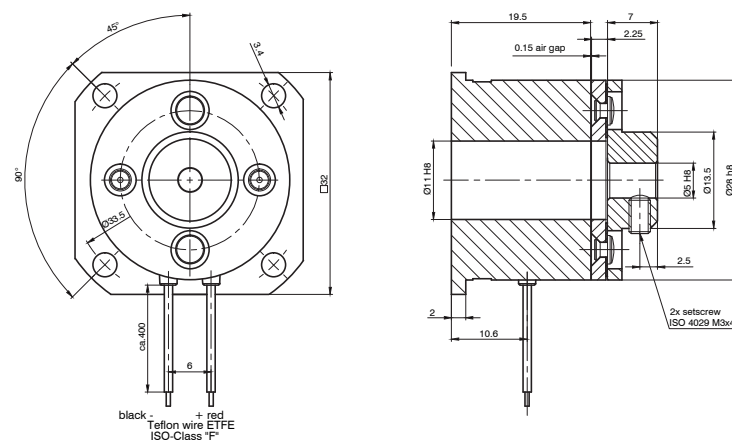
	BRAKE-BKE-0.4-5.0	BRAKE-BKE-1.0-6.35	BRAKE-BKE-2.0-6.35
Electrical data	24 VDC /8W	24 VDC/10W	24 VDC/11W
Switch-on/switch-off time	10 ms/6 ms	12 ms/6 ms	25 ms/6 ms
Hub	Borehole Ø5 H8 with 2 grub screws AM3x4	Borehole Ø6.35 H8 with 2 grub screws AM3x4	Borehole Ø6.35 H8 with 2 grub screws AM4x6
Fastening	With 4 M3 screws	With 4 M3 screws	With 4 M3 screws
Connection	Leads L = 400mm	Leads L = 400mm	Leads L = 400mm

VERSIONS

Type	Supply Voltage V	Holding Torque Ncm	Shaft Diameter mm	Moment of Inertia kg mm ²	Size mm	Weight kg
Brake-BKE-0.4-5.0	24	40	5	1.3	32	0.08
Brake-BKE-1.0-6.35	24	100	6.35	2.1	34	0.11
Brake-BKE-2.0-6.35	24	200	6.35	6.7	42	0.185

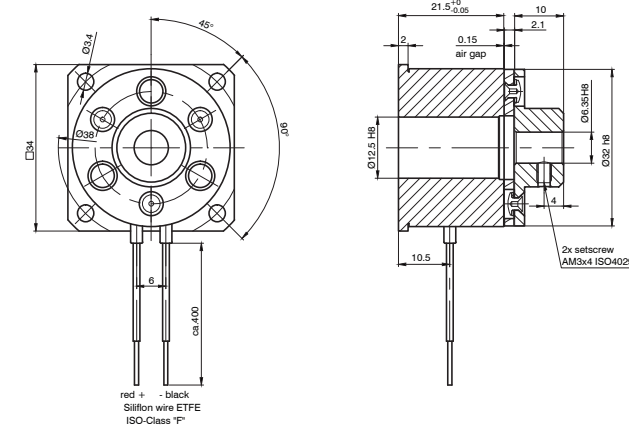
DIMENSIONS (IN MM)

BKE-0.4-5.0



DIMENSIONS (IN MM)

BKE-1.0-6.35



BKE-2.0-6.35

